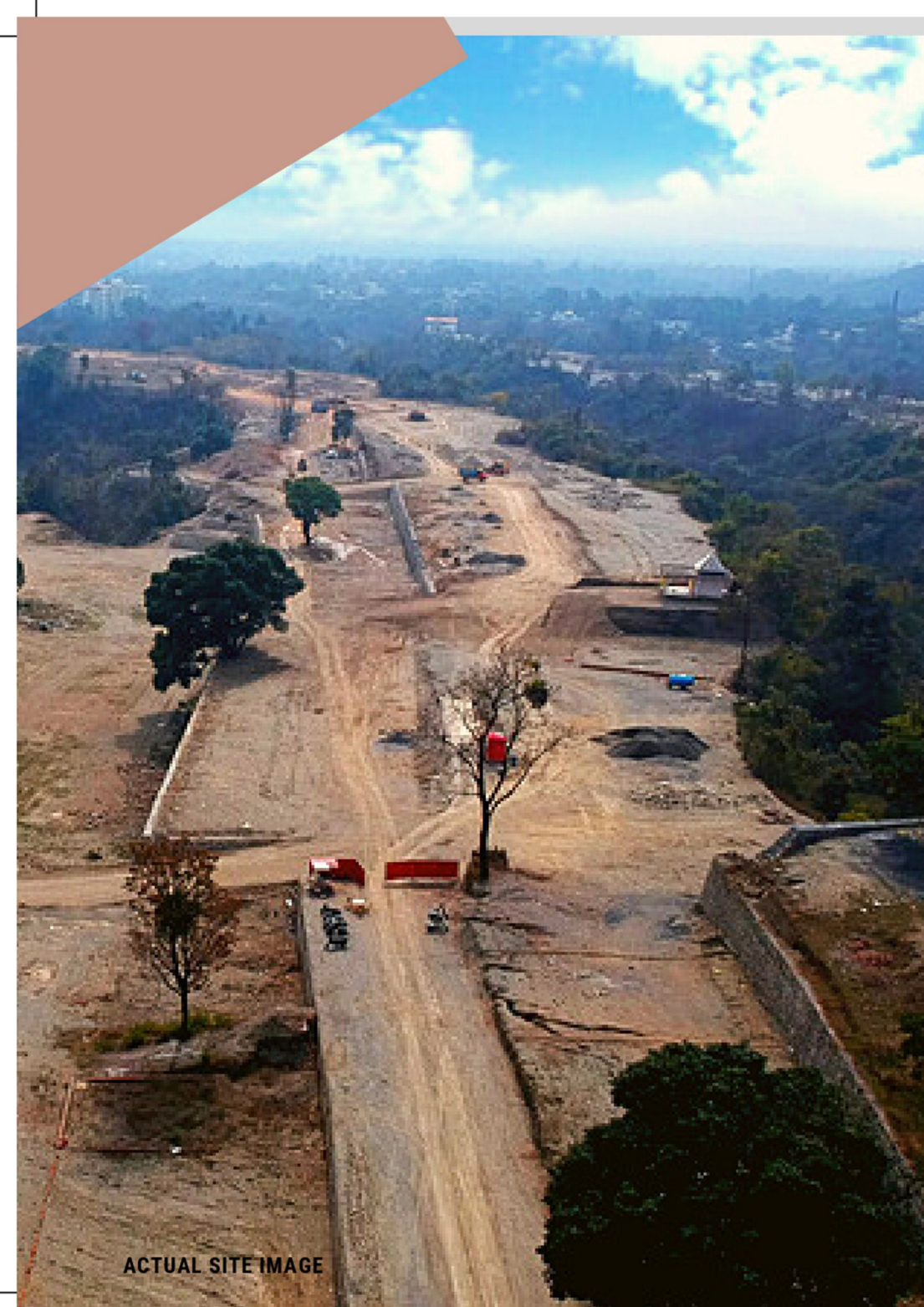




*There's living, and then
there's MH living!!!*



**SERENITY WITHOUT
COMPROMISES**



ACTUAL SITE IMAGE

WHEN WAS THE LAST TIME YOU SAW A SUNRISE THAT TOOK YOUR BREATH AWAY?
DO YOU REMEMBER THE LAST TIME WHERE YOU WOKE UP TO THE MELODIOUS SOUND OF THE BIRDS CHIRPING ON YOUR ROOFTOP?
WHEN WAS THE LAST TIME YOUR FACE WAS CARESSED BY THE GENTLE BREEZE OF A TYPICAL SUMMER EVENING?
ONLY WHEN YOU SPENT A FORTUNE TO TAKE A RECREATIONAL BREAK AT SOME LUXURIOUS BUSINESS PROPERTY RIGHT? NOW IMAGINE MAKING THESE SUNRISES, SUMMER BREEZE AND CHIRPING OF THE BIRDS A PART OF YOUR REGULAR LIFESTYLE.

PRESIDENCY REALTY BRINGS YOU MAYFAIR HIGHLANDS AND ALSO YOUR DREAM HOME THAT IS NESTLED IN THE OUTSKIRTS OF DEHRADUN IN PURUKUL. CRADLED IN THE HIMALAYAN FOOTHILLS, THIS LUXURIOUS TOWNSHIP OF VILLAS & BUNGALOWS IS THE LARGEST TOWNSHIP PROJECT IN DEHRADUN MUSSOORIE ROAD




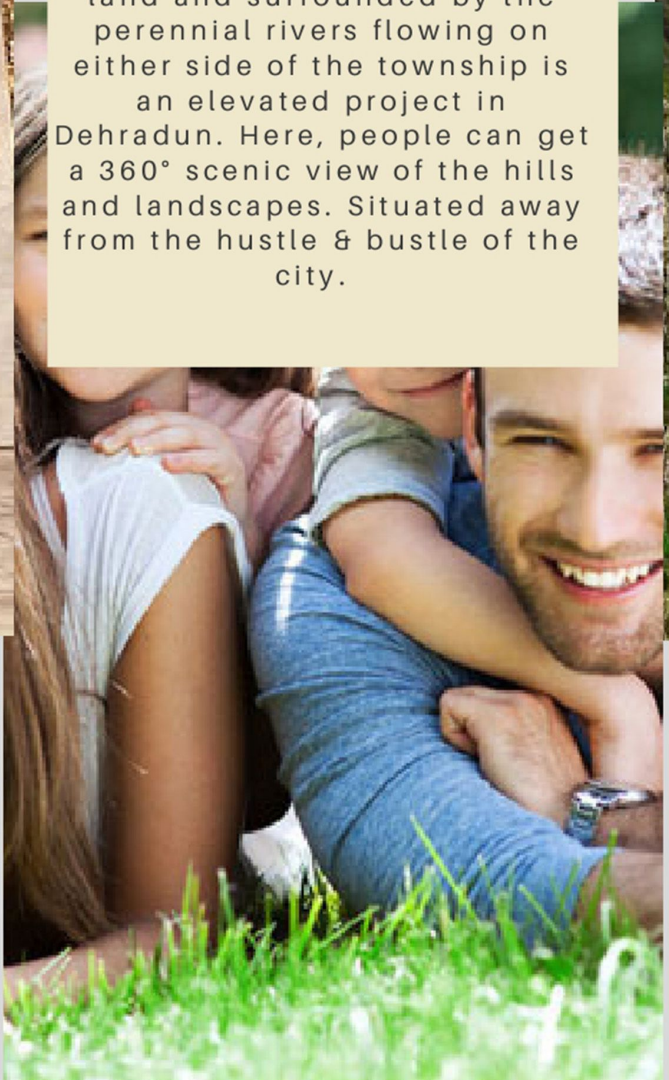
MAYFAIR HIGHLANDS

Mayfair Highlands, the first of its kind island projects sprawled across 20 acres of land and surrounded by the perennial rivers flowing on either side of the township is an elevated project in Dehradun. Here, people can get a 360° scenic view of the hills and landscapes. Situated away from the hustle & bustle of the city.



WHAT IS MAYFAIR ??

The word Mayfair originated in London. It became well known for the annual "May Fair" that took place there in the 16th century. By the end of the 18th century, most of Mayfair was built for upper-class housing and its affluent status. Many major projects have been started in India's metro cities including New Delhi, Hyderabad, Mumbai, etc. Our vision is inspired by the same Mayfair that originated in London. We aim to provide the most luxurious and elite amenities that justify our company name Presidency that epitomises luxury living.

WHAT IS HIGHLANDS?

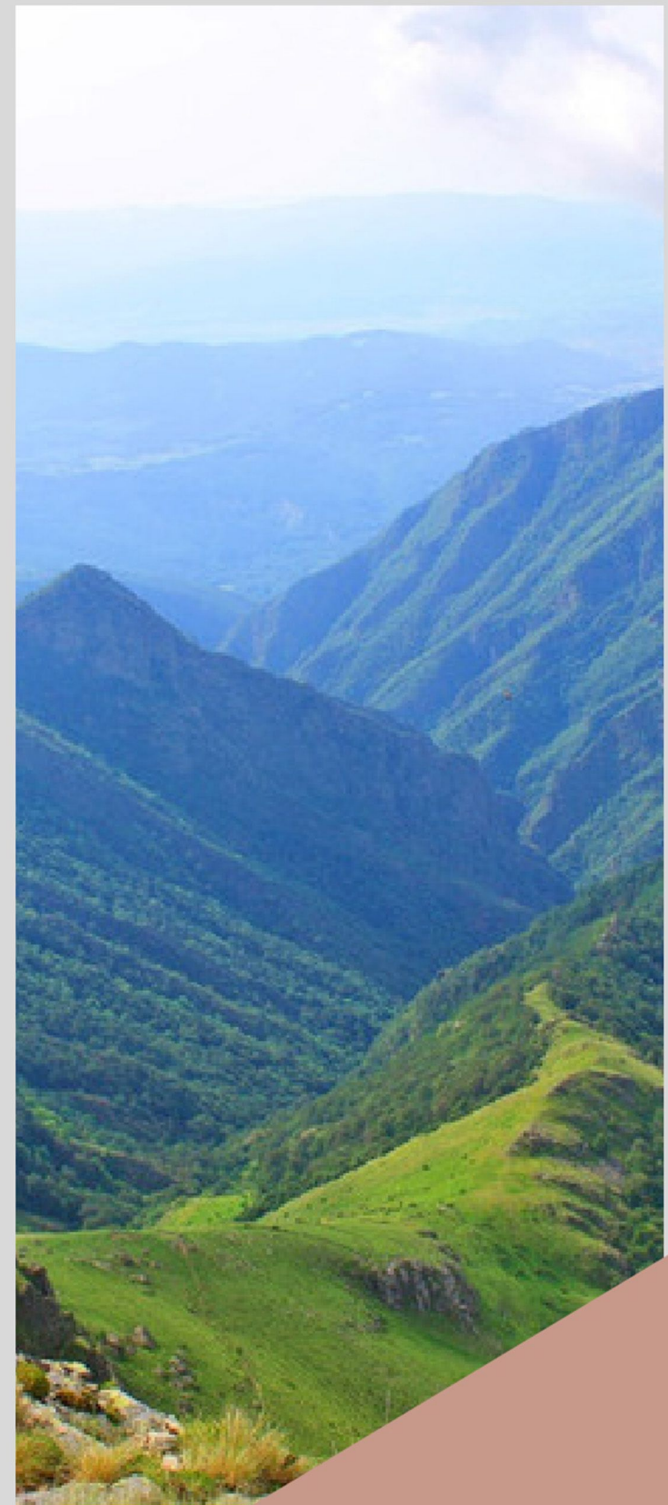
A Highland is any mountainous region or elevated mountainous plateau. Most of the highlands lead up to large mountainous regions and when we talk about the Mayfair Highlands, we emphasise your favourite holiday destination Mussoorie. The elevation of Mayfair highlands is 920 meters above sea level. It is situated on the Shivalik foothills.

HIGHLANDS

MAYFAIR HIGHLANDS, THE FIRST OF ITS KIND ISLAND PROJECTS SPRAWLED ACROSS 31 ACRES OF LAND AND SURROUNDED BY THE PERENNIAL RIVERS FLOWING ON EITHER SIDE OF THE TOWNSHIP IS AN ELEVATED PROJECT IN DEHRADUN. HERE, PEOPLE CAN GET A 360° SCENIC VIEW OF THE HILLS AND LANDSCAPES. SITUATED AWAY FROM THE HUSTLE & BUSTLE OF THE CITY, MAYFAIR HIGHLANDS IS VERY CLOSE TO NATURE YET PACKED WITH ALL MODERN FACILITIES AND CONVENIENCE. THE COMFORT AND LUXURY OF RESIDING HERE ARE JOYFUL AND EXPERIENTIAL AT THE SAME TIME. AT MAYFAIR HIGHLANDS, WE ASSURE TOP-NOTCH QUALITY CONSTRUCTION WITH METICULOUS PLANNING AND IMPECCABLE EXECUTION. WITH SCENIC BEAUTY ADDING TO YOUR AESTHETICS AND HEALTHY AIR QUALITY INDEX, ONE IS EXPECTED TO ENJOY AN ELEVATED LIFESTYLE.

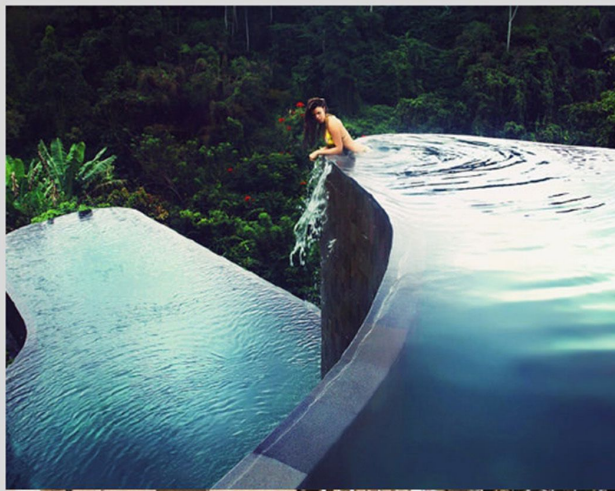
MAYFAIR HIGHLANDS IS SURROUNDED BY HILLS ON ALL SIDES AND IS WELL-CONNECTED BY VARIOUS MODES OF TRANSPORTATION AND NECESSITIES. IT OFFERS LUSH GREEN VIEWS ALONG WITH A VARIETY OF FOLIAGE INCLUDING SHED TREES AND PLANTS OFFERING A BEAUTIFUL PATH TO PROMENADE WITH NEIGHBOURS.

SHOWCASING A LIFESTYLE OF LUXURY AND SOPHISTICATION AND MEETING ALL ASPECTS OF MODERN LIVING, MAYFAIR HIGHLANDS EMPHASISES DISTINGUISHED SPACES FOR DISTINGUISHED LIVING. FOR THE MOST DISCERNING CLIENTS.



PROJECT AMENITIES

'Set on the periphery of scenic exquisiteness, the prestigious MH offers you safety , security & world class amenities that you, your family & friends can enjoy for years to come.



A world of Amenities

- Infinity Swimming Pool
- Secure Kids Play Area
- Fountains
- Meditation Park
- Exclusive Party Lawn/Garden
- Gazebo / Pergola Sitings
- Fas tag Entry
- Temple in Society
- Designer Street Lights
- Sewage Treatment Plan
- Underground Electrification
- 3 tier – 24*7 Security
- Grocery store & Convenience shops
- Multisport Playground -Tennis, Basketball, Badminton Courts
- Power Backup 24*7
- 24*7 water Supply
- 40 ft. wide roads
- Compact Substation
- LT Panels
- 4-layered Tar coal Roads

CLUB FACILITIES



- Well-equipped state-of-the-art Gymnasium
- Kids play zone
- Dance Studio, Yoga & Aerobics Room
- Jacuzzi at rooftop
- Rooftop Café /Restaurant
- Club atrium and lounge
- Spa & Sauna / masseuse services
- Infinity Swimming pool
- Multipurpose hall / ballroom -3000 sq. ft.
- Launderette in premises
- Fire Safety Norms
- 10 Rooms Guest House



SALIENT FEATURES

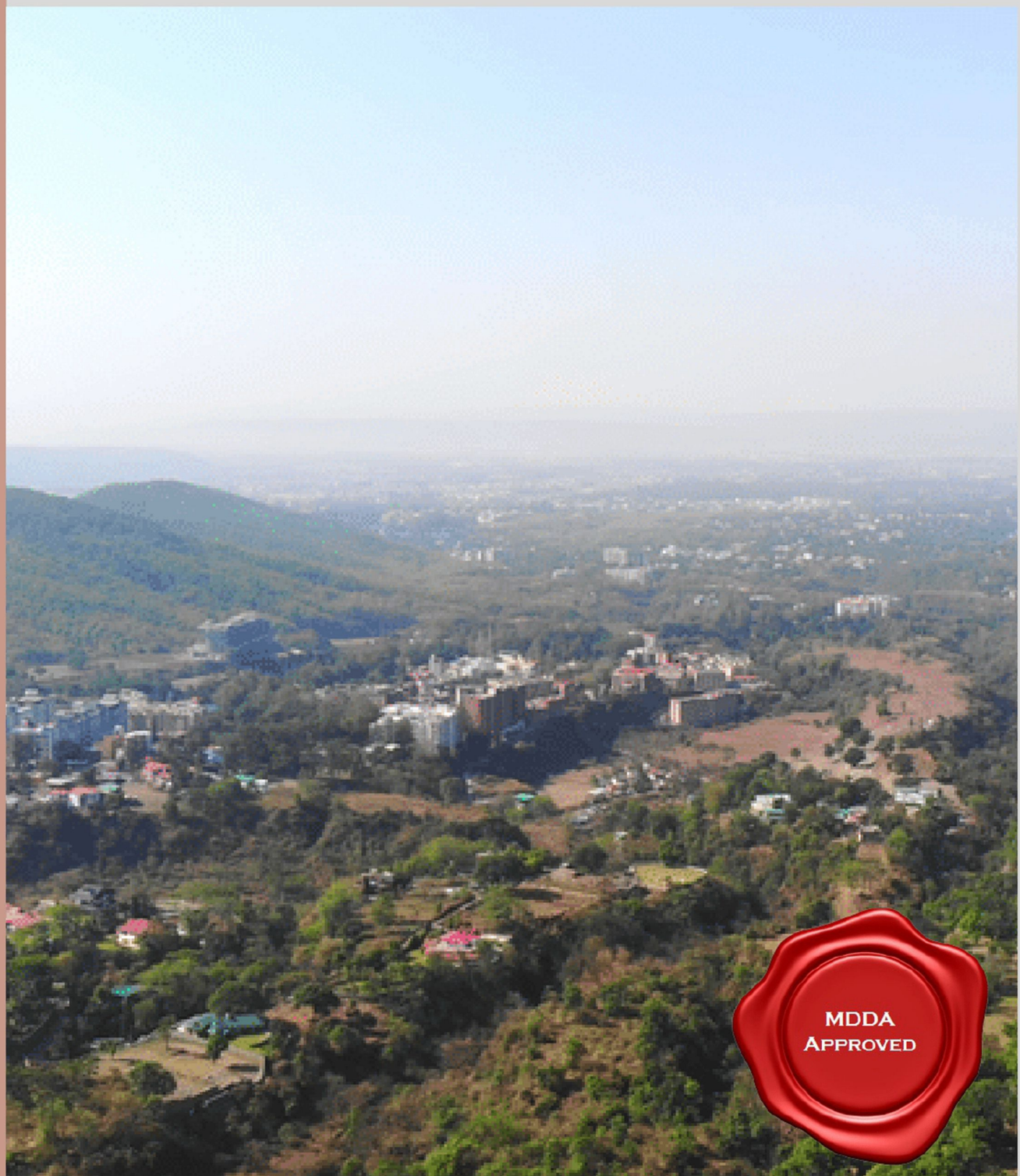


- MDDA Approved Project
- RERA Registered
- Underground drainage
- Airtel Fiber Optic Cable
- Numerous sit outs
- Covered sit outs for senior Citizens
- Gated Community
- Pollution Free Atmosphere
- Landscape adorned with water features
- Scenic View of Shivalik Mountain ranges
- Lavish Entryway
- Guide Map
- Modern Art crossways
- Balinese style Garden/Glass house
- Reflexology path
- Exotic plants & flowers
- Aromatic plants garden

The Most
Premium
Upcoming
Township!!!

PROJECT USPS

- 700 Mtrs from main Mussoorie Road
- Convenience- Commercial Markets nearby with all facilities, grocery stores, markets, fooding, Etc.
- First Island Project in Dehradun
- Sunlight with no obstruction of high-rise buildings in 200 ft. vicinity.
- Biggest MDDA approved residential project on Mussoorie road
- 360° Panoramic view



PANORAMIC VIEW OF DEHRADUN

ACTUAL SITE IMAGE



ACTUAL SITE IMAGE



AN ISLAND PROJECT

Surrounded by greenery on all sides

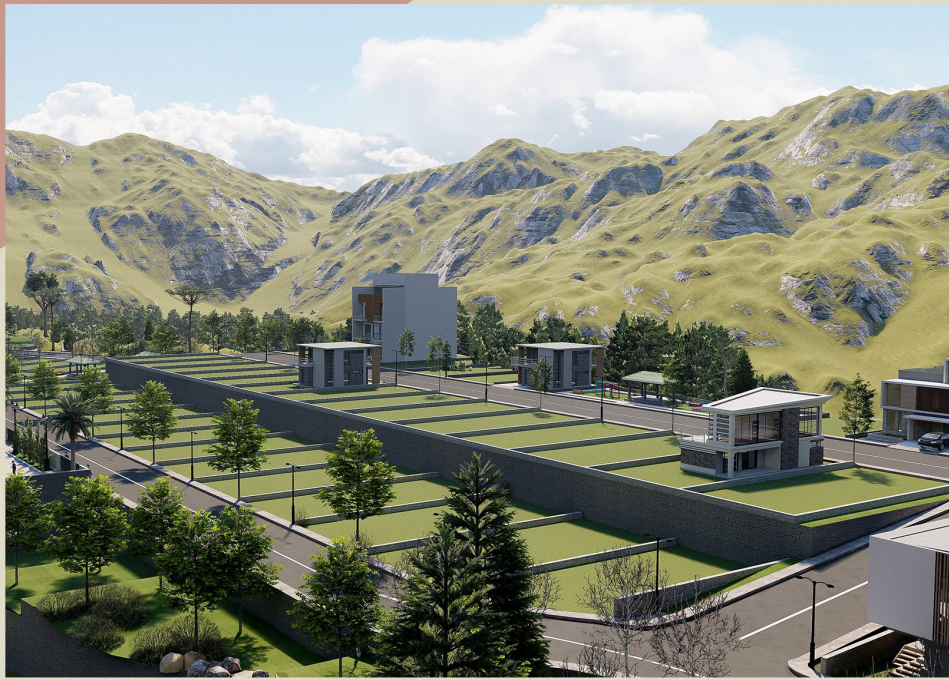






3 D V I E W S





SCHOOL & COLLEGES

- DIT University- 500 mtr
- IMS Unison University- 500 mtr
- Unison World School- 600 mtr
- The Aryan School- 2 km
- Pestle Weed College- 1 km
- Kasiga School- 1 km



HOTELS & APARTMENTS

- Hyatt Regency - 700 mtr.
- Eden Senior Living Wellness- 500 mtr.
- Antara Dehradun- 1 km

OTHERS

- Hans Foundation Ashram- 250 mtr
- Shiv Mandir- 1.5 km
- Abhimanyu Cricket Academy- 1.5 km

CAFÉ AND RESTAURANTS

- KFC- 500 mtr
- Subway- 500 mtr

LOCATION HIGHLIGHTS





SAINIK DHAM

An ambitious project by the Government of Uttarakhand to pay a tribute to the defence personnel. It is planned to execute as the fifth pilgrimage site in Uttarakhand consisting of the war memorial, war museum, art gallery, five-star hotel of GMVN & not only this, the names of all the martyrs from 1947 till date will be inscribed in golden letters. This highly ambitious project is situated just 200 meters away from the Mayfair Highlands and once completed, it will be inaugurated by Hon'ble PM Shri Narendra Modi Ji.

DEHRADUN MUSSOORIE ROPEWAY

This will be the 5th largest ropeway in the world. The ropeway starting point will be linked to ISBT, the airport and the railway station of Dehradun. It will connect Mussoorie's Library Chowk to Dehradun's Purukul & shall cover the distance of Dehradun and Mussoorie in just 15 minutes. This ropeway shall sprawl across 5.5 km and shall transport around 1100-1200 people at a time which will make the conveyance easier for tourists. It will also have the capacity to park around 1500 cars at one time to ease parking woes for travellers & local people. Located only at a distance of 2 km from Mayfair Highlands, the tourists will enjoy the picturesque settings of Doon Valley and Mussoorie.

-

UPCOMING PROJECT NEAR MAYFAIR HIGHLANDS



Company Overview

About Presidency

The pioneer of integrated communities in Dehradun, Presidency Realty has set an impressive track record in planning, designing, executing and delivering world-class homes, business spaces and industrial parks in Dehradun. Presidency Realty has redefined the property landscape through its pioneering integrated community developments in Dehradun.

We epitomize "passion at work" in totality. It serves as our compass which guides us towards creating world-class quality products and workmanship. It guides us to be transparent in all our dealings and adhere to delivery on time, each time. We draw heavily from the innate qualities of our founder, Mr Akshay Jain in imbibing and living the brand. Our work revolves around creating "quality" with immense passion like Mr Akshay Jain himself - the builder extraordinaire, who revolutionized the way people perceive quality in the realty sector. We have a track record for being the most reliable and trustworthy builder with a repertoire of award-winning properties across Dehradun. We changed the way real estate is viewed in Dehradun, as we peep into the future, we remain firmly committed to creating urban living spaces where people can live, work and play smart. We rely on our people, their capacity to innovate and use technology to create immense value for all our stakeholders. We will continue to raise the bar and set new standards in the industry to strengthen this goal of ours.

OUR PROJECTS

BRIDCUL

It is a Commercial Building for an organization of the Uttarakhand Government with a built-up area of 20,000 sq. ft at Majra, Dehradun which was completed and sold by us in 2017.

MAYFAIR AVENUE (MA)

A luxurious residential project on 6 acres near ISBT Dehradun started in 2019, which deals in plots, villas and apartments.

MAYFAIR BUSINESS CENTER (MBC)

A 55,000 sq. ft Commercial building at Majra, Dehradun including brands like KFC, MAX, FH Interio.

MAYFAIR BUSINESS PARK (MBP)

The first MDDA approved & exclusively designed commercial market started in 2020. This market includes Shops, Office Space, Commercial Space & Plots with a built-up area of around 1,50,000 sq. ft.

MAYFAIR BUSINESS ARCADE (MBA)

Second MDDA approved commercial market of Dehradun designed to provide professional, inspiring and clean work environments of all sizes & for all types of budgets started in 2021. At its completion, MBA will consist of 2,50,000 sq ft of commercial space.

MAYFAIR INDUSTRIAL PARK (MIP) 1

The 3-acre MIP in Mohobaewala is a planned industrial development in which there are industrial plots and buildings. It was started in 2019 and now consists of many factories and warehouses.

MAYFAIR INDUSTRIAL PARK (MIP) 2

Second MIP spread across 2 acres started in 2021. It is located on Titan Road, Mohabewala.

PRESIDENCY HEADQUARTER PHQ



ACTUAL SITE IMAGE



ACTUAL SITE IMAGE

MAYFAIR AVENUE

BRIDCUL

ACTUAL SITE IMAGE



MAYFAIR BUSINESS PARK

ACTUAL SITE IMAGE



*Serenity without
compromises*

MAYFAIR

Highlands

ABOVE ALL OTHERS

GET IN TOUCH



Ishwar Nagar Road, Near
DIT, Mussoorie Road,
Dehradun



79003-79003



presidencyrvpl@gmail.co
m

FIND US

WEBSITE

www.presidencygoupindia.com

FACEBOOK

@presidencyRVPL

INSTAGRAM

@presidencyrealty





Highlands
ABOVE ALL OTHERS

COMING SOON

